

Android GLDB APP Installation Guide

Android GLDB 应用安装指南

In order to have a good installation experience, this installation guide is divided into 3 parts. The first part is the normal installation situation with risk prompt, and the second and third parts are the situations that cannot be installed normally.

The examples shown below are system settings for some mobile phone models. The settings of different brands of mobile phones are slightly different. If it is different, please find the corresponding function of the mobile phone to change the settings.

为了有良好的安装体验，本安装指南分为 3 个部分，第一部分为有风险提示的正常安装情况，第二部分与第三部分为遇到不可安装的情况。

下列展示的示例，为部分手机型号系统设置案例。不同品牌手机设置略有不同，如果不同请你找到手机相应的功能进行更改设置。

1. Normal installation example with risk prompt

有风险提示的正常安装示例

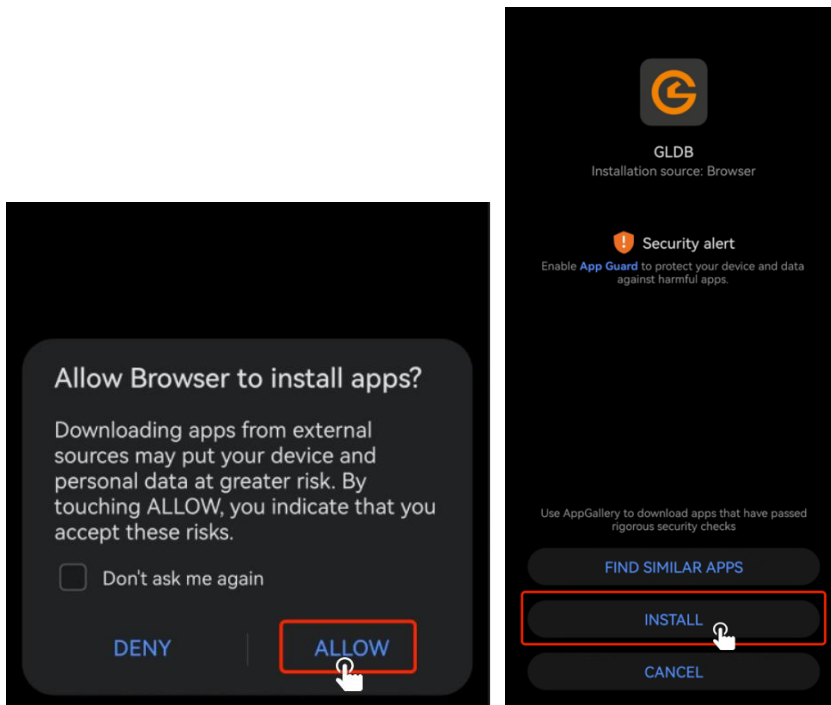
1.1 Scan the code to download the app and “ALLOW” the browser to install the application

扫码下载 app，允许浏览器安装应用

1.2 Ignore the security reminder and click “INSTALL”. After installation, you can open it

(The installation will not have any other impact on the mobile phone. The prompts of different brands of mobile phones are slightly different).

忽略安全提醒，点击安装，安装完成即可打开（安装不会对手机造成其他影响，不同品牌手机提示语略有不同）



2. Install an external source app that is not turned on and cannot be installed

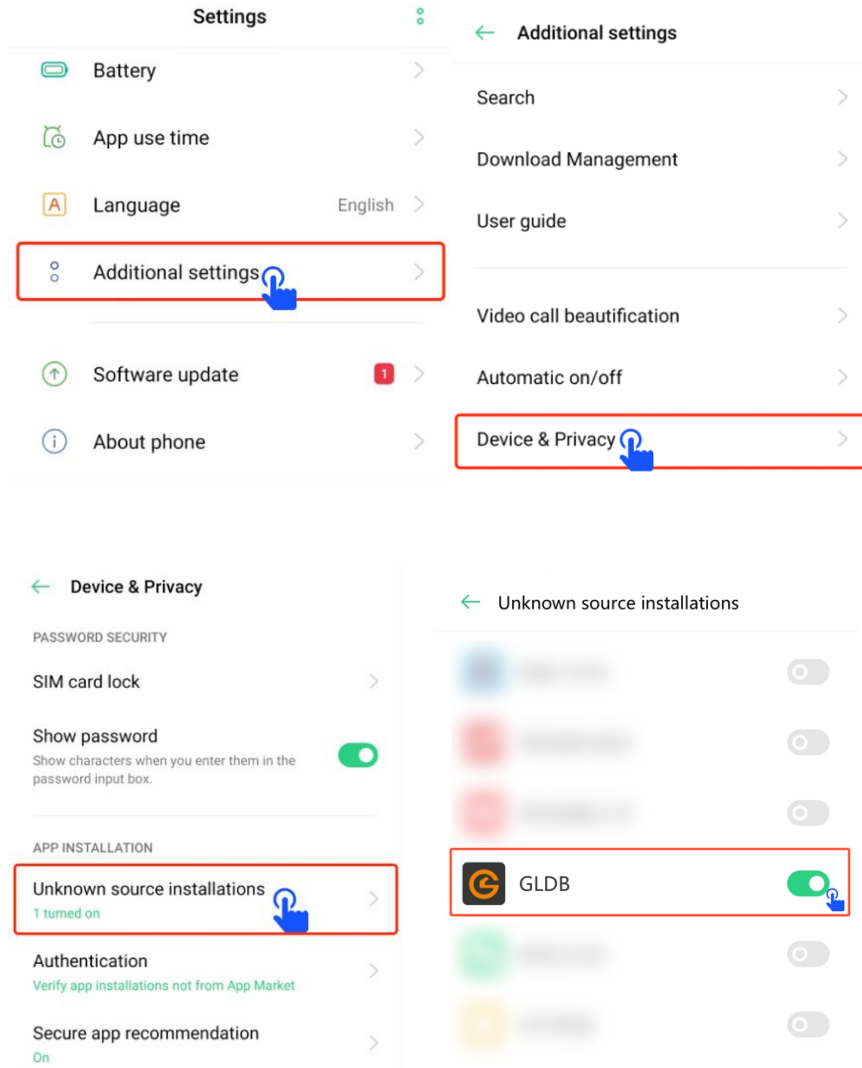
未开启安装外部来源应用，无法安装

2.1 If the app cannot be installed after QR code scanning and downloading, please open the system settings

如果扫码下载后无法安装 app，请打开系统设置

2.2 Open "Additional settings" - click "Device & Privacy" - click "Unknown source installations" and turn on the corresponding application switch (Different brands of mobile phones have slightly different function locations)

打开安全设置——点击安装外部来源应用——打开对应应用开关即可（不同品牌手机功能位置略有不同）



2.3 Please return to the page of downloading the app or download the app again for installation. Refer to the first section of this guide.

请返回到下载 app 的页面或重新下载 app 进行安装，安装流程见第一部份

3.App Guard is turned on and can't be installed

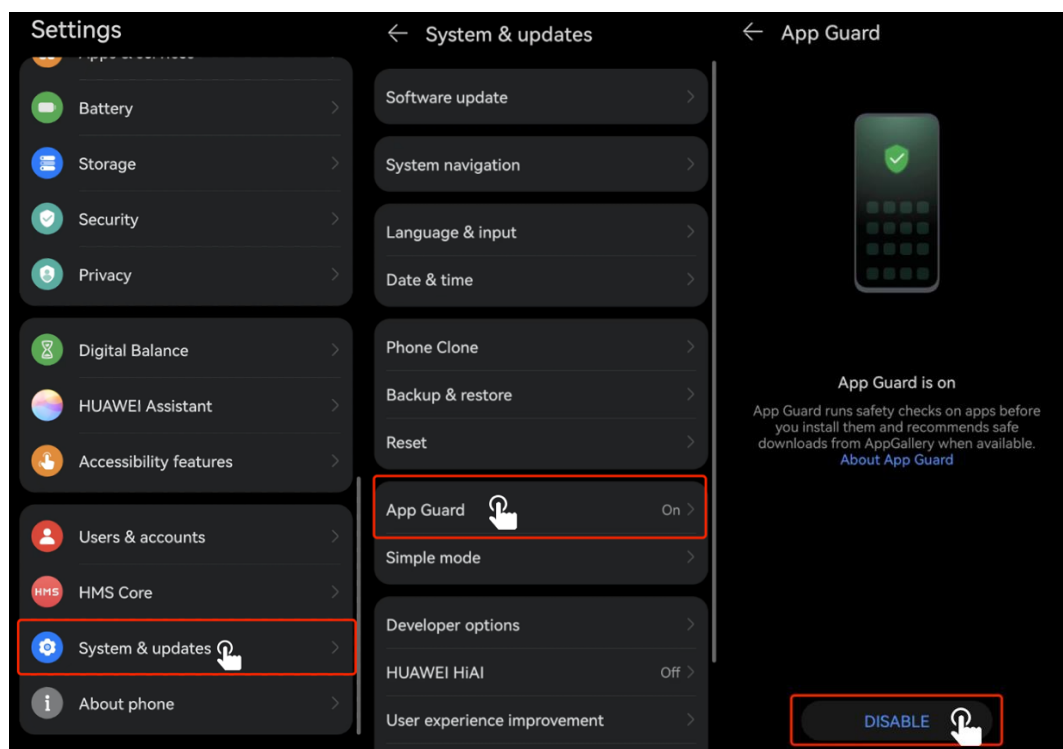
已开启纯净模式，无法安装

3.1 If the app cannot be installed after QR code scanning and downloading, please open the system settings.

如果扫码下载后无法安装 app，打开系统设置

3.2 Click “System & updates” - click “App Guard” – click “DISABLE” and enter the phone password to close (Change the settings and enter the mobile phone password. This process is safe and will not cause losses. Different brands of mobile phones have slightly different functional positions)

点击系统和更新——点击纯净模式——点击退出按钮后输入手机密码进行关闭（更改设置输入手机密码，这个流程是安全的不会造成损失。不同品牌手机功能位置略有不同）



3.3 Please return to the page of downloading the app or download the app again for installation. Refer to the first section of this guide.

请返回到下载 app 的页面或重新下载 app 进行安装，安装流程见第一部分

3.4 Since the original system settings have been changed in 3.2, if it is necessary to restore to the previous installation, the recovery process is: Click “System & updates” - click “App Guard” – click “ENABLE” to reopen it. (The function positions of different brands of mobile phones are slightly different)

由于 3.2 改变了原有系统设置，如果需要恢复至安装前，恢复流程为点击系统和更新—

—点击纯净模式——点击按钮打开（不同品牌手机功能位置略有不同）

